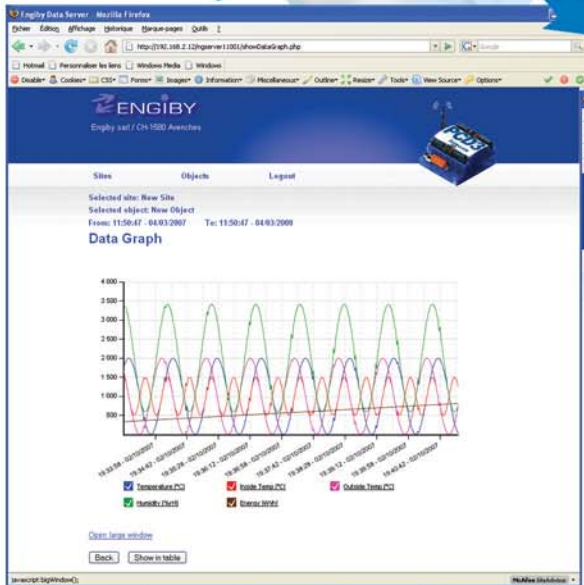
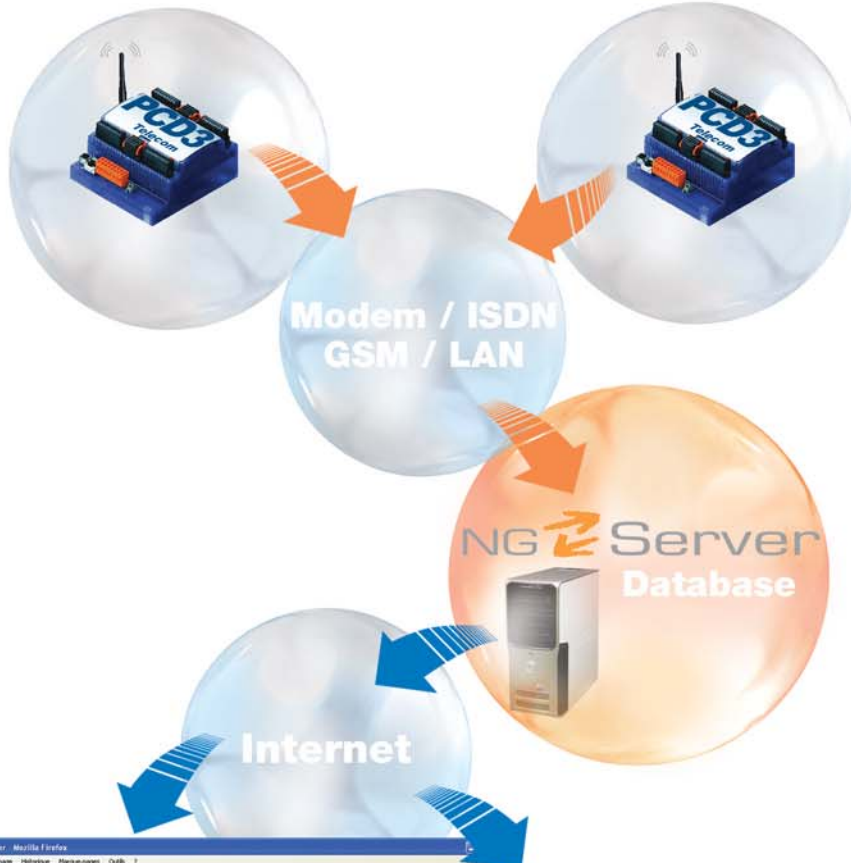


# NG Server



This screenshot shows the "Data List" section of the NG Server web interface. It displays a table with the following columns: "Time", "Temperature [C]", "Status", "Outside Temp [C]", "Status", "Outside Temp [C]", "Status", "Outside Temp [C]". The table contains 12 rows of data, showing temperature readings and status changes over time.

Time	Temperature [C]	Status	Outside Temp [C]	Status	Outside Temp [C]	Status	Outside Temp [C]
19:33:02/02/10/2007	1728.0	2000	1499.0	2000	1096.0	2000	34
19:33:02/02/10/2007	1794.0	2001	1462.0	2001	1007.0	2001	34
19:33:02/02/10/2007	1849.0	2002	1447.0	2002	1527.0	2002	33
19:33:02/02/10/2007	1880.0	2003	1393.0	2003	1430.0	2003	33
19:33:02/02/10/2007	1927.0	2004	1326.0	2004	1348.0	2004	32
19:33:02/02/10/2007	1967.0	2005	1243.0	2005	1261.0	2005	32
19:33:02/02/10/2007	1988.0	2006	1150.0	2006	1152.0	2006	31
19:33:02/02/10/2007	1998.0	2008	963.0	2008	963.0	2008	29
19:33:02/02/10/2007	1990.0	2007	1056.0	2007	1056.0	2007	30
19:33:02/02/10/2007	1989.0	2009	857.0	2009	856.0	2009	28
19:33:02/02/10/2007	1969.0	2010	754.0	2010	756.0	2010	27
19:33:02/02/10/2007	1940.0	2011	680.0	2011	689.0	2011	26

# NG Server

NG-Server is a standard package designed to collect data from remote sites. Data transmission uses analogue Modems, ISDN, ADSL or LAN networks. All data are saved in a centralized SQL database. A Web-server offers a selective access to the values with tabular and graphical representations.

Typical applications:

- Energy Distribution / Consumption
- Cooling / Heating Systems
- Building Maintenance
- Hevac Applications
- Power Plant Monitoring
- Water Distribution
- Environmental Values (temperature, humidity)
- Production Data Acquisition

The package is based on SAIA-PCD systems. A function library is provided for the data storage and package transmission. The NG-Server application is modular and includes several applications for data reception, database management, Web-server, SMS and Email alarm transmission.

The main advantages of the concept are:

- Full buffered data handling and transmission with external site autonomy
- Access to all data of all sites on Internet without online connection
- Included self diagnostic, functional supervision, lifecheck and error reporting
- Simple and fast site commissioning with few or no server configuration

Used technologies:

- PCD: Modem, Ethernet, File System, FTP Server, etc...
- PC: DOT.NET, SQL, Web-Server, PHP, Flash, etc...

## Internet demo at [www.ngserver.ch/demo](http://www.ngserver.ch/demo)

Site Selection



Object Selection



Value Selection



Value List

